

Classic Organ Control Systems



Stand alone VFD with brass bezel.

The Classic Pipe Organ Control System is a universal control system for organs that can be configured to provide all control and switching functions for any size or type pipe or electronic organ. The system usually consists of a microprocessor based Console Control System (CCC), a Pipe Control Computer (PCC) and various input/output boards, to control each individual organ. Interconnection between the console and the pipe chamber is accomplished by a single 6 pair twisted cable.

FEATURES:

Combination Action:

- Available as a stand alone or as part of a complete control system.
- General and divisional pistons/cancels.
- Compatible with drawknobs, tongue-tabs, rocker-tabs, lighted rocker-tabs or push button stop controls.
- Multi-level memory for combinations.
- "Quick access" programmable memory level select pistons.
- User programmable crescendo pedal sequences.
- Programmable sforzando reversibles.
- Coupler reversibles and settable stop reversibles.
- Programmable registration sequencer with editing features.
- Accommodates lit and double touch pistons.
- Built in diagnostics.

Keying and Couplings:

- Inter and intra manual couplers.
- Additional "floating divisions."
- Unification and borrowing.
- Solo or Melody couplers.
- Auto pedal coupler.
- Transposer.



VFD display with control buttons and black bezel.

The pipe driver boards of the system can power any type of chest or magnet. New for 2006 is a high-power pipe magnet driver (PDB-6) that can drive up to 96 low-resistance pipe magnets. Also new is a built in MIDI sequencer which has the capacity for 99 songs and the Organ Assistant which is a software program that makes editing MIDI stops easy.

This widely used system is installed on hundreds of organs in both Canada and the USA. Let us design a system for you. Give us a call!

- Pedal Divide function.
- Manual Transfer.
- Multiple interconnected consoles.
- Compatible with slider chests.
- Standard keying or optical/velocity keying.
- Sustain, sustenuto, pizzicato couplers.
- 2nd touch keyboard inputs.
- Tuning controls w/temperature sensor for electronic voices.
- Extensive setup capability.

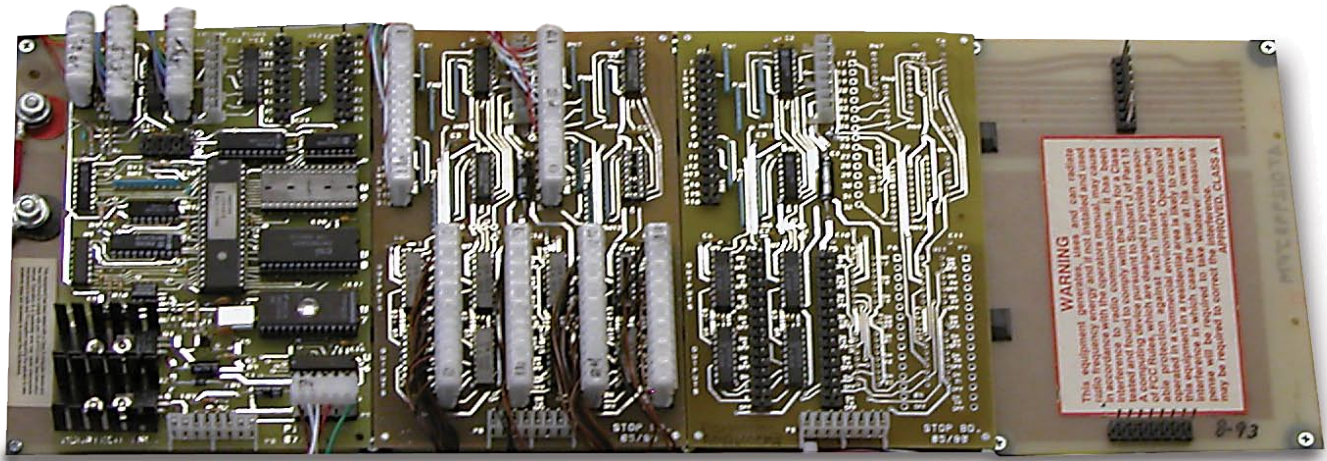
MIDI in/out for record/playback and PC connection:

- Connect to hardware sequencer or personal computer.
- Record and playback entire performances, including keys, stops and swell shoes.
- Sequencer input may be used to play the organ from a remote keyboard.
- Save/restore organ piston and MIDI –stop settings to/from sequencer or MIDI equipped PC.

MIDI in/out for voice module control:

- Up to 16 (64 with expander) MIDI stops may be included in the organ.
- MIDI stops are affected by all couplers and transposer.
- Multiple memory levels for MIDI stop configurations.

608 Combination Action



Klann Organ Supply was the first to use a permanent solid state E-Prom based memory system in a combination action. This means no battery or other power supply is needed to keep the memory while the organ is off. It is ideal for replacing older style combination actions in rebuild projects.



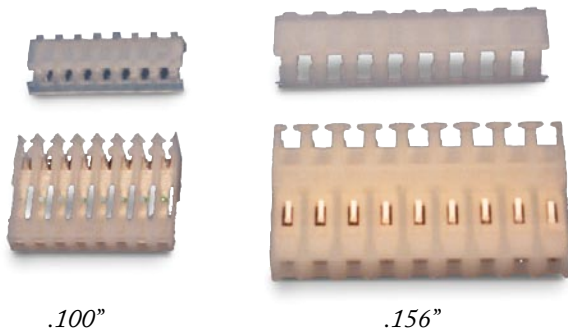
608 Digital Memory Select

The basic system will handle up to 352 stop and coupler actions, up to 128 pistons including 32 reversibles, 8 divisions, and 30 memory levels. Larger instruments can be accommodated with minor modifications to the basic system. The diagnostic tests and on-site programming features are accessed through the use of the test beeper which plugs into header P7 on the piston board.

Connectors

Insulation displacement connectors are used in wiring to circuit board headers. Klann Organ Supply stocks connectors and covers in several different sizes.

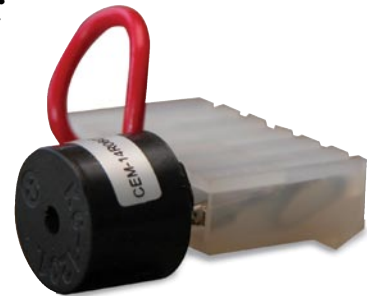
Panduit Connector and Panduit Cover



System Components

System Components	Dimensions
Mother Board	19" x 6-3/4" x 1-3/4"
Piston Board	4-7/16" x 6-3/4"
Full Stop Board (32)	4-7/16" x 6-3/4"
Half Stop Board (16)	4-7/16" x 6-3/4"
Memory Select Digital Panel	2-1/2" x 2-1/2"
Stop Output Isolation Diode Junction Board	

Test Beeper



Termination Tools



Panduit Termination Tool (Red for .100" small connectors and Black for .156" large connectors)

Panduit Manual Repair Tool (Available either size)

